

En-Visage-ing system & instrumented statistics

Lindsay Holmwood

Scenario:

A close-up photograph of a sloth clinging to a tree branch. The sloth's face is in focus, showing its small eyes and large, dark nose. Its thick, brown fur is visible, and its long, white, stringy hair is seen on the left side of the frame. The background is a blurred green, suggesting foliage.

Slow HTTP requests



Perceived
load time
increase



Not reproducible

Identical configuration

Scientific method

Data

metric collection



Tools?

sysstat
dstat

Correlation?

collectd

lightweight statistics collection daemon



platform for
collecting
time series data



plugin based



network aware

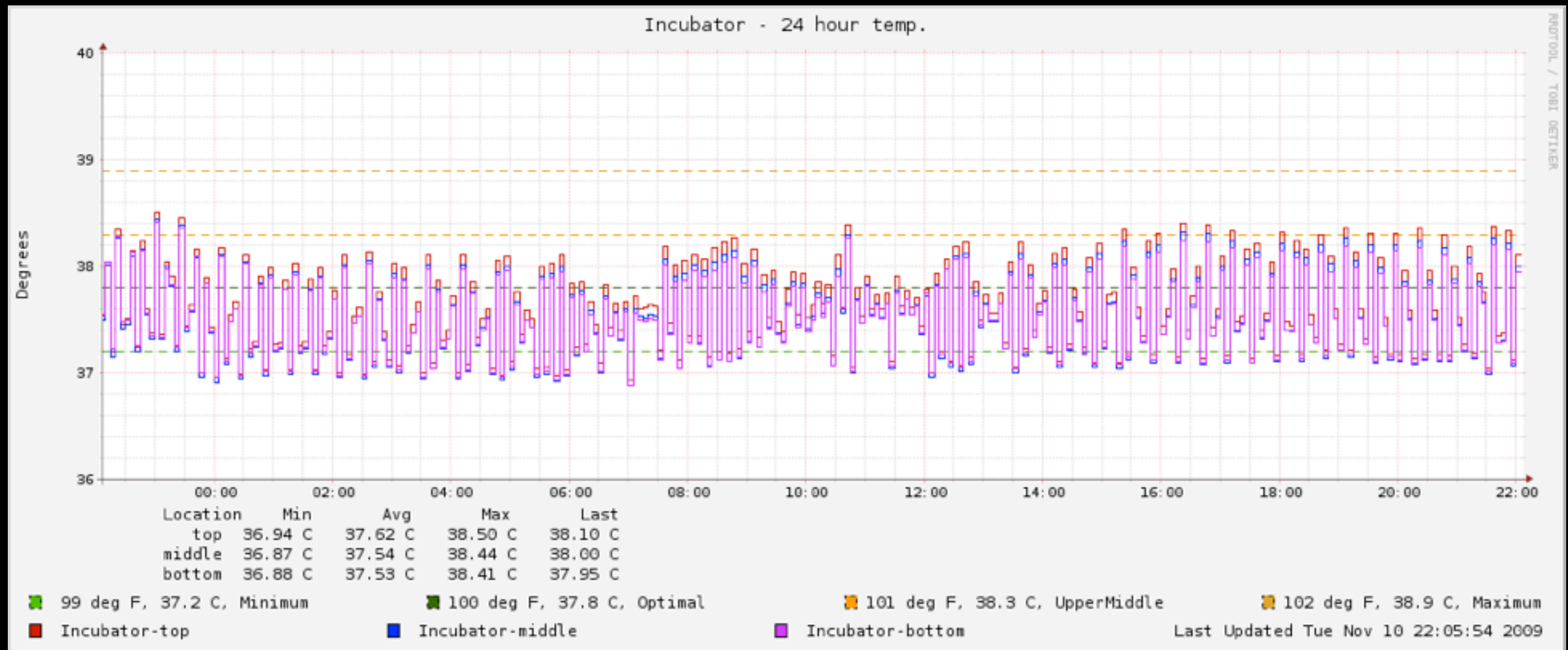


well defined APIs

Graphing?



RRDtool

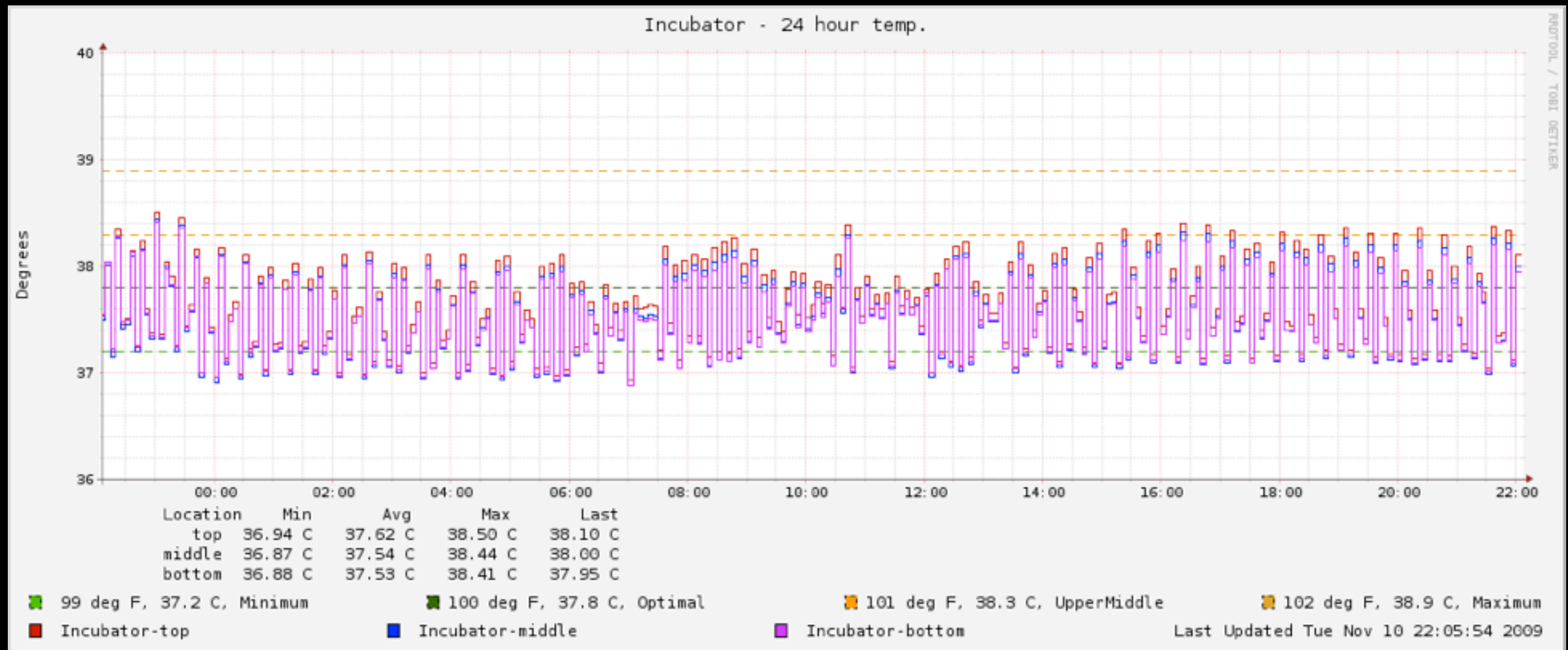






Do not want.

RRDtool





Visage

<http://visage-app.com>

JSON

JavaScript & SVG



Profiles

Saved pages of graphs

```
# apt-get install librrd-ruby ruby-dev \  
                                rubygems collectd  
$ gem install visage-app  
$ visage-app start
```




Instrumenting your own statistics

curl_json



Sinatra & Rack Middleware


```
#!/usr/bin/env ruby

require 'sinatra'
require 'yajl/json_gem'

GC.enable_stats

class Cadence < Sinatra::Base
  get '/metrics/gc' do
    stats = { "collections"      => GC.collections,
              "growth"          => GC.growth,
              "allocated_size"  => GC.allocated_size,
              "num_allocations" => GC.num_allocations }
    stats.to_json
  end
end

use Cadence
run Sinatra::Base
```



Thank you!